

## ● 2-piece CR mounting



### Features

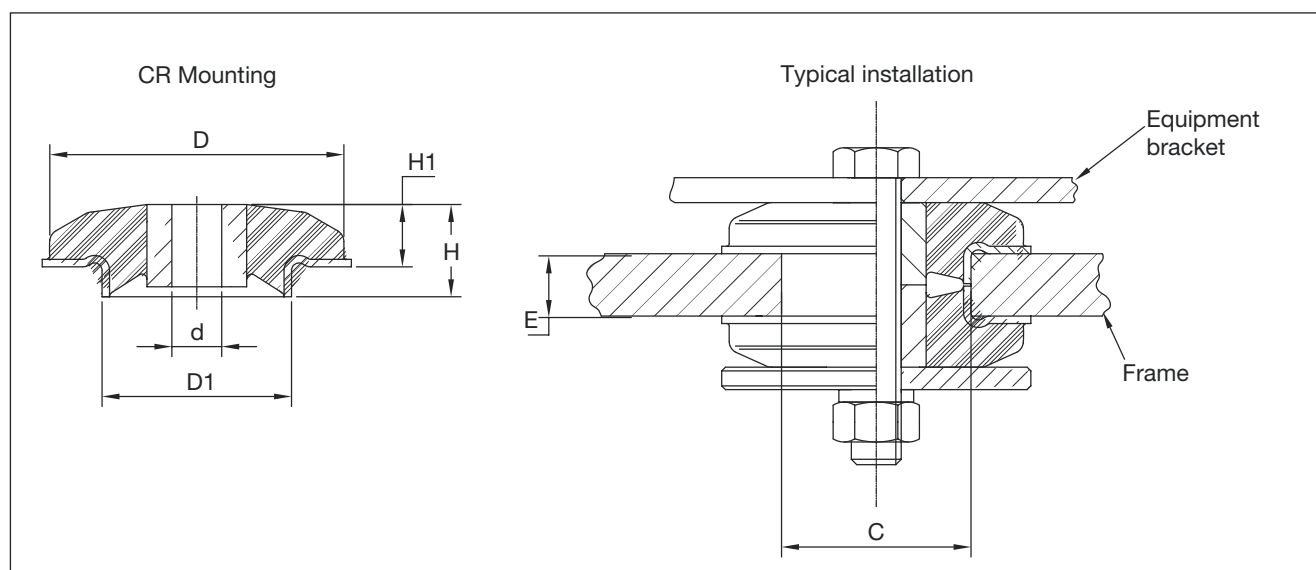
With washer it is a compact fail-safe design easy to fit with a single bolt.

- Integral bonded steel flange prevents rubber wear at interface with bracket.
- No radius or chamfer required for installation hole.
- 2-piece design gives excellent isolation performance and rebound control during shock loading of the vehicle.

### CR-Controlled Rebound mounting

A range of mounting designed for high load capacity and low installation height. The high loading for a given size is achieved by utilizing the rubber to best advantage in shear and compression.

- Off-highway engines and Cabs



Type	Part no.	Dimension (mm)							Bolt Size	Max. Bolt Torque Nm	Max. Load kg	Washer Part no.
		D	D1	d	H	H1	E	C ±0,2				
17-2190-45	20-01110-01	65	37,8	16	23,3	15,1	12	37,9	M16	170	75	20-01495-01
17-2190-60	20-01111-01	65	37,8	16	23,3	15,1	12	37,9	M16	170	100	20-01495-01
17-2178-45	20-02506-01	94	55,5	16	28	19	20	56,0	M16	250	115	20-01494-01
17-2178-60	10-03729-01	94	55,5	16	28	19	20	56,0	M16	250	210	20-01494-01
17-1984-45	10-03727-01	100	60	22	38	25,8	25	60,5	M22	500	260	20-01493-01
17-1984-60	10-03728-01	100	60	22	38	25,8	25	60,5	M22	500	400	20-01493-01
17-1931-45	10-00622-01	118	75,5	20	38,3	26,4	25	76,0	M20	500	225	20-01493-01
17-1931-60	10-00623-01	118	75,5	20	38,3	26,4	25	76,0	M20	500	430	20-01493-01
11-1029-45	10-03722-01	115	63	27	45	33,5	25	64,0	M24	700	550	20-00534-01
11-1029-60	10-00793-01	115	63	27	45	33,5	25	64,0	M24	700	900	20-00534-01